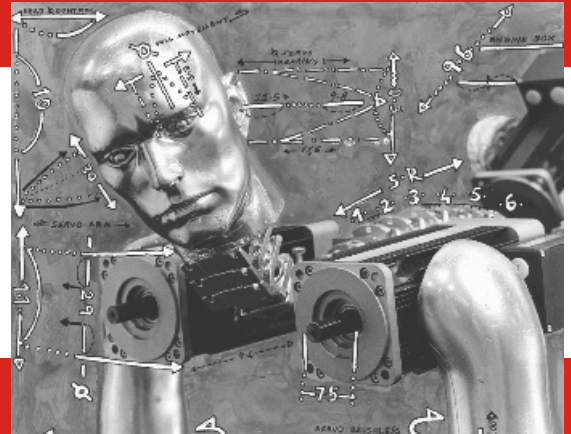
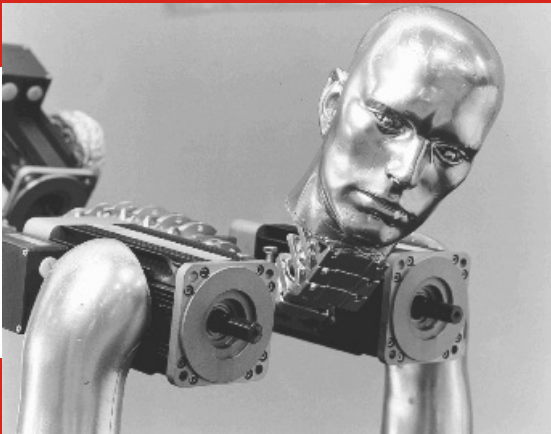


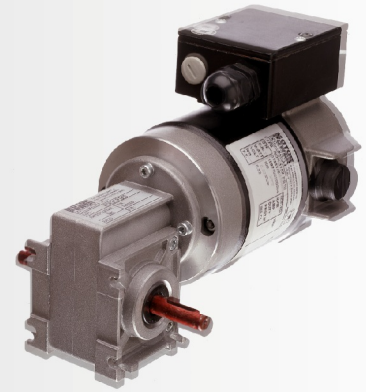
ROK

MOTORIDUTTORE C.C.



ROK

Una serie di motoriduttori a vite senza fine equipaggiati con motori in corrente continua e in corrente alternata. La gamma ROK, rispetto ad una classica configurazione motore - riduttore, presenta vantaggi oggettivi di performance, grazie all'accoppiamento diretto.



<i>Tipo Motoriduttore</i>	<i>Potenza Watt</i>	<i>Velocità Ingresso (Rpm)</i>	<i>Tensione (Vdc)</i>	<i>Rapporti Riduzione</i>	<i>Coppia Massima (Nm)</i>
ROK 311 S ROK 311 M ROK 311 L	45 70 90	3000	24 ÷ 48	7 ÷ 100	10
ROK 315 X ROK 315 XS ROK 315 S	100 150 200	3000	24 ÷ 180	7 ÷ 100	10
ROK 335 XS ROK 335 S ROK 335 SL	150 200 300	3000	24 ÷ 180	7 ÷ 100 7 ÷ 75	10 13

Grandezza riduttori interasse 31mm e 33 mm

Riduttore con carcassa in alluminio, corona in bronzo-argento e vite rettificata in acciaio

Eccezionale durata e resistenza all'usura

MOTORIDUTTORI IN CORRENTE CONTINUA

D.C. GEARMOTORS

SERIE – Series

ROK 311

TABELLA DI DEFINIZIONE SIGLA DI ORDINE PER MOTORIDUTTORI SERIE ROK 311

HOW TO ORDER A ROK 311 WORMGEARMOTOR

ROK	311M	30	48	01.04....	B	P.B10	07	A1
SERIE SERIES	TIPO TYPE	VELOCITA' MOTORE MOTOR SPEED	TENSIONE MOTORE MOTOR VOLTAGE	OPZIONI OPTIONS	VERSIONE MOTORE MOTOR VERSION	TIPO DI RIDUTTORE WORMGEAR TYPE	RAPPORTO DI RIDUZIONE RATIO	CONFIGU- RAZIONE CONFIGU- RATION
ROK	311S 311M 311L	30	24 48	01- Dinamo tachimetrica <i>Tacho generator</i> 02- Freno 0.5 Nm <i>Brake 0.5 Nm</i> 03- Freno 0.5 Nm + din. tachim. <i>Tacho gen.+ brake 0.5 Nm</i> 04- Uscita cavi 2P 1m <i>Flying leads 2P 1m</i> 05- Uscita cavi 2P 1m + D.T. <i>Tacho gen. + flying leads 2P 1m</i> 06- Past. Termica (solo morset.) <i>Thermal cut-out (only on terminal box version)</i> 07- Protezione IP55 <i>IP55</i> 08- Pred. encoder EH38 <i>EH38 encoder prearrangement</i> 09- Pred. encoder EH53 <i>EH53 encoder prearrangement</i> 10- Distanziale encoder n°1 <i>Encoder spacer n°1</i> 11- Morsettiera <i>Terminal box</i>	B : Base <i>Basic</i>	P.B10 P.K14 FQ1.K14.DX FQ1.B10.DX FT1.S12.DX P1.K14	07 10 12 15 18 24 30 38 55 75 100	A1 C1 E1 G1

DATA SHEET N° 6201000002

MOTORIDUTTORI IN CORRENTE CONTINUA D.C. GEARMOTORS

SERIE-Series

ROK 311S

WATT Motore-motor 45	Nm Riduttore-gear 10
--	--

CARATTERISTICHE GENERALI - Performance characteristics

MOTORE Motor		POTENZA - Power 45 W				VELOCITA - Speed 3000 RPM				COPPIA - Torque 0.14 Nm			
RAPPORTO RIDUZIONE Ratio	I:	7	10	12	15	18	24	30	38	55	75	100*	
VELOCITA USCITA Output speed	RPM	429	300	250	200	167	125	100	79	55	40	30*	
COPPIA NOMINALE Rated Torque	Nm	0.8	1	1.2	1.5	1.7	1.6	2	2.5	3.1	2.8	4	
COPPIA MASSIMA Max. Torque	Nm-max.	(A)	9.7	9.5	12.1	10.7	10.3	9.2	10.3	11.4	10.4	7.3	7.4
		(B)	14.5	14.2	18	16	15.5	13.8	15.4	17.1	15.6	12	12
TENSIONE NOMINALE Rated Voltage	VOLT	48	24					(2)					
CORRENTE NOMINALE Rated Current	AMP	1.3	2.6										
RESIST. ARMATURA Armature resistance	Ohm	6.3	1.33										
INDUTT. ARMATURA Armature inductance	mH	9	2										
COST. TENSIONE Voltage constant	Ke V/Krpm	13	6.4										
COST. TEMPO ELETT. Elect. time constant	Te ms	1.5	1.5										
COST. TEMPO MECC. Mech. time constant	Tm ms	6	5										
COST. TEMPO TERMICO Thermal time constant	Tt min	20	20										

* Solo su richiesta only by request (2) Altre tensioni a richiesta-other voltages by request (A) Coppia massima riduttore continuativa (A) Max. gear continuous torque (B) Massima coppia impulsiva riduttore (B) Max. gear pulse torque

DATI MECCANICI - Mechanical data

CARICO RADIALE Radial Load	N	120
CARICO ASSIALE Axial Load	N	80
PESO MOTORIDUTTORE Gearmotor weight	Kg	1.7
LUBRIFICAZIONE Lubrication		GRASSO Long life grease
CORONA Worm		BRONZO Bronze
VITE Screw		ACCIAIO Steel

DATI ELETTRICI - Winding data

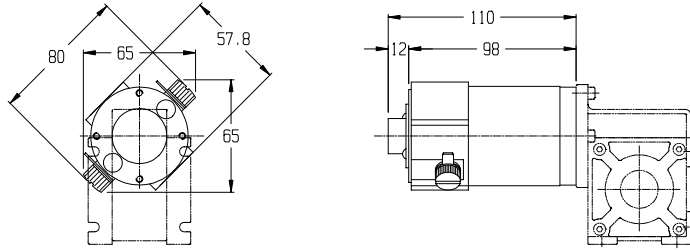
CLASSE ISOLAMENTO Insulation class		F
FATTORE DI SERVIZIO Duty cycle		S1
FATTORE DI FORMA Form Factor	FF	1
TEMPERATURA AMBIENTE Room temperature	T rif °C	40°
GRADO DI PROTEZIONE Protection	IP	54
INERZIA ROTORE Rotor inertia	Jm Kgcm ²	0.28

ROK311S

DIMENSIONI (mm)

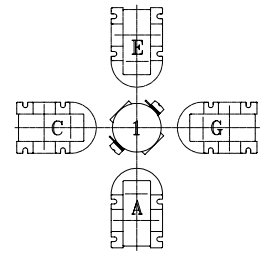
DIMENSIONS (mm)

B *



Vista frontale

Front view

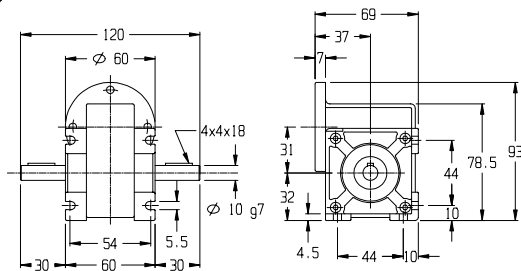


Configurazione

Configuration

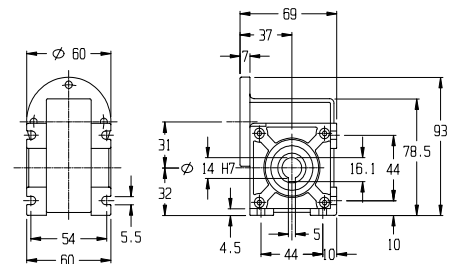
*** P.B10**

STD Config. **A1**



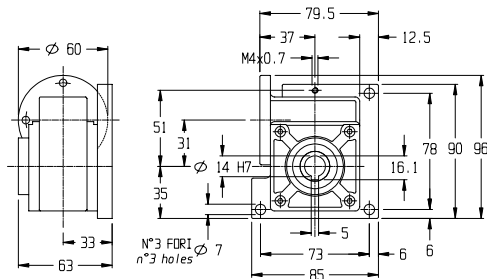
*** P.K14**

STD Config. **A1**



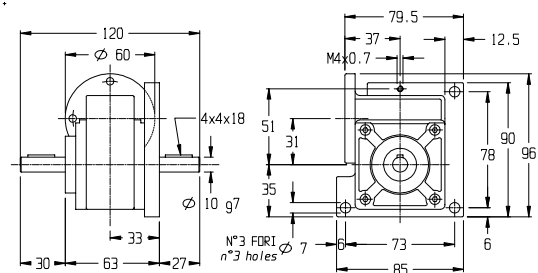
*** FQ1.K14.DX**

STD Config. **A1**



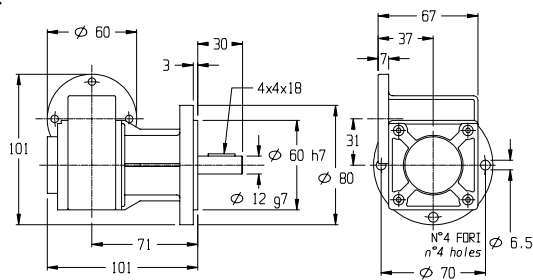
*** FQ1.B10.DX**

STD Config. **A1**



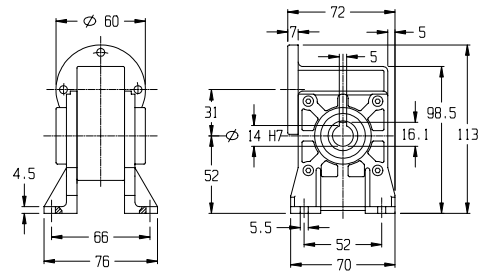
*** FT1.S12.DX**

STD Config. **A1**



*** P1.K14**

STD Config. **A1**



Accoppiare motore e riduttore contrassegnati dallo stesso segno * / **

Fitting motor and gear box marked with the same symbol * / **

MOTORIDUTTORI IN CORRENTE CONTINUA D.C. GEARMOTORS

SERIE-Series

ROK 311M

WATT
Motore-motor
70

Nm
Riduttore-gear
10

CARATTERISTICHE GENERALI - Performance characteristics

MOTORE Motor		POTENZA - Power 70 W				VELOCITA - Speed 3000 RPM				COPPIA - Torque 0.22 Nm			
RAPPORTO RIDUZIONE Ratio	I:	7	10	12	15	18	24	30	38	55	75	100*	
VELOCITA USCITA Output speed	RPM	429	300	250	200	167	125	100	79	55	40	30*	
COPPIA NOMINALE Rated Torque	Nm	1.2	1.5	1.8	2.2	2.6	2.5	3.1	3.8	4.8	4.3	6.2	
COPPIA MASSIMA Max. Torque	Nm-max.	(A) (B)	9.7 14.5	9.5 14.2	12.1 18	10.7 16	10.3 15.5	9.2 13.8	10.3 15.4	11.4 17.1	10.4 15.6	7.3 12	7.4 12
TENSIONE NOMINALE Rated Voltage	VOLT	48	24	(2)									
CORRENTE NOMINALE Rated Current	AMP	1.95	3.65										
RESIST. ARMATURA Armature resistance	Ohm	2.33	0.85										
INDUTT. ARMATURA Armature inductance	mH	4	1.34										
COST. TENSIONE Voltage constant	Ke V/Krpm	13.2	7.3										
COST. TEMPO ELETT. Elect. time constant	Te ms	1.7	1.58										
COST. TEMPO MECC. Mech. time constant	Tm ms	6.5	6										
COST. TEMPO TERMICO Thermal time constant	Tt min	25	25										

* Solo su richiesta only by request (2) Altre tensioni a richiesta-other voltages by request (A) Coppia massima riduttore continuativa (A) Max. gear continuous torque (B) Massima coppia impulsiva riduttore (B) Max. gear pulse torque

DATI MECCANICI - Mechanical data

CARICO RADIALE Radial Load	N	120
CARICO ASSIALE Axial Load	N	80
PESO MOTORIDUTTORE Gearmotor weight	Kg	2
LUBRIFICAZIONE Lubrication	GRASSO Long life grease	
CORONA Worm	BRONZO Bronze	
VITE Screw	ACCIAIO Steel	

DATI ELETTRICI - Winding data

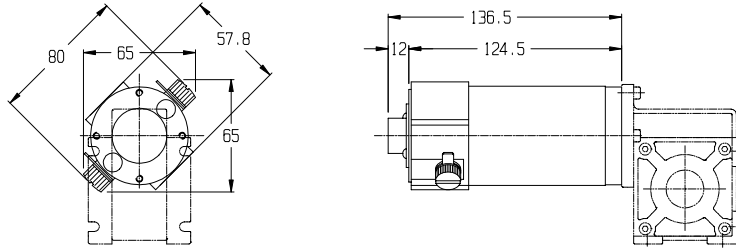
CLASSE ISOLAMENTO Insulation class	F	
FATTORE DI SERVIZIO Duty cycle	S1	
FATTORE DI FORMA Form Factor	FF	1
TEMPERATURA AMBIENTE Room temperature	T rif °C	40°
GRADO DI PROTEZIONE Protection	IP	54
INERZIA ROTORE Rotor inertia	Jm Kgcm ²	0.47

ROK311M

DIMENSIONI (mm)

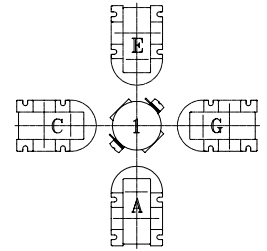
DIMENSIONS (mm)

B *



Vista frontale

Front view

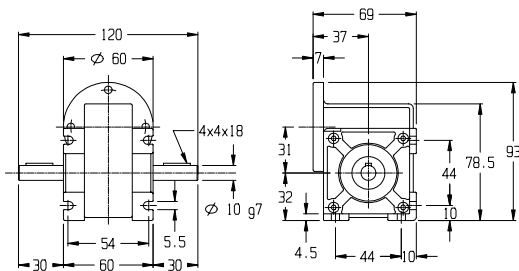


Configurazione

Configuration

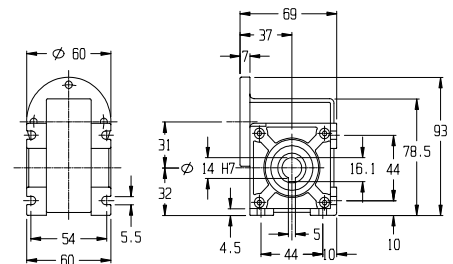
*** P.B10**

STD Config. **A1**



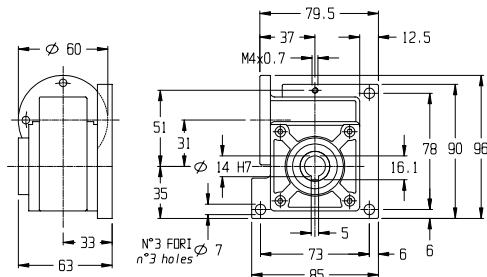
*** P.K14**

STD Config. **A1**



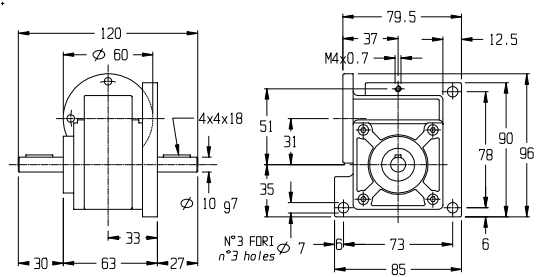
*** FQ1.K14.DX**

STD Config. **A1**



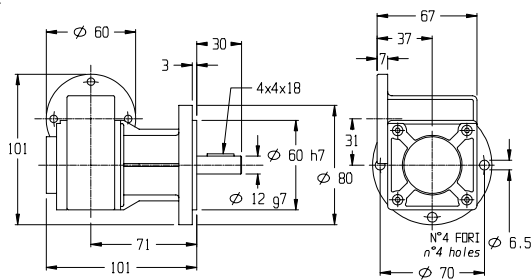
*** FQ1.B10.DX**

STD Config. **A1**



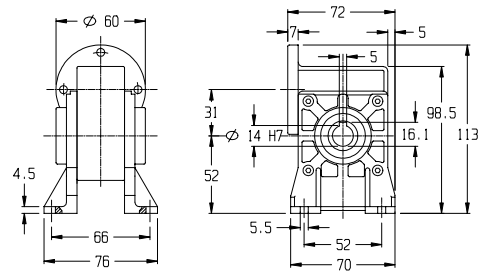
*** FT1.S12.DX**

STD Config. **A1**



*** P1.K14**

STD Config. **A1**



Accoppiare motore e riduttore contrassegnati dallo stesso segno * / **

Fitting motor and gear box marked with the same symbol * / **

MOTORIDUTTORI IN CORRENTE CONTINUA

D.C. GEARMOTORS

SERIE-Series

ROK 311L

WATT
Motore-motor
95

Nm
Riduttore-gear
10

CARATTERISTICHE GENERALI - Performance characteristics

MOTORE Motor		POTENZA - Power 95 W				VELOCITA - Speed 3000 RPM				COPPIA - Torque 0.3 Nm			
RAPPORTO RIDUZIONE Ratio	I:	7	10	12	15	18	24	30	38	55	75	100*	
VELOCITA USCITA Output speed	RPM	429	300	250	200	167	125	100	79	55	40	30*	
COPPIA NOMINALE Rated Torque	Nm	1.6	2	2.5	3.1	3.6	3.5	4.2	5.2	6.6	5.9	7.4	
COPPIA MASSIMA Max. Torque	Nm-max.	(A) (B)	9.7 14.5	9.5 14.2	12.1 18	10.7 16	10.3 15.5	9.2 13.8	10.3 15.4	11.4 17.1	10.4 15.6	7.3 12	7.4 12
TENSIONE NOMINALE Rated Voltage	VOLT	48	24					(2)					
CORRENTE NOMINALE Rated Current	AMP	2.5	4.9										
RESIST. ARMATURA Armature resistance	Ohm	2.43	0.48										
INDUTT. ARMATURA Armature inductance	mH	3	0.7										
COST. TENSIONE Voltage constant	Ke V/Krpm	13.3	7.5										
COST. TEMPO ELETT. Elect. time constant	Te ms	1.24	1.46										
COST. TEMPO MECC. Mech. time constant	Tm ms	9	6										
COST. TEMPO TERMICO Thermal time constant	Tt min	30	30										

* Solo su richiesta only by request (2) Altre tensioni a richiesta-other voltages by request (A) Coppia massima riduttore continuativa (A) Max. gear continuous torque (B) Massima coppia impulsiva riduttore (B) Max. gear pulse torque

DATI MECCANICI - Mechanical data

CARICO RADIALE Radial Load	N	120
CARICO ASSIALE Axial Load	N	80
PESO MOTORIDUTTORE Gearmotor weight	Kg	2.6
LUBRIFICAZIONE Lubrication	GRASSO Long life grease	
CORONA Worm	BRONZO Bronze	
VITE Screw	ACCIAIO Steel	

DATI ELETTRICI - Winding data

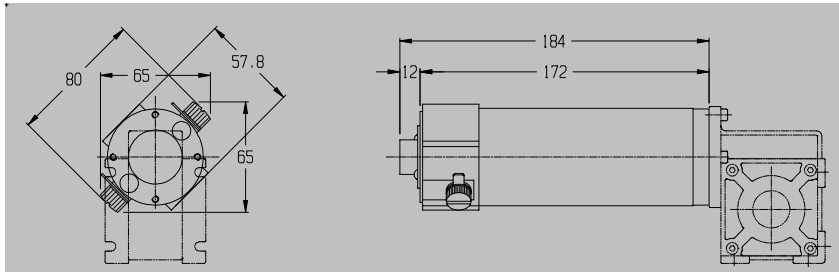
CLASSE ISOLAMENTO Insulation class		F
FATTORE DI SERVIZIO Duty cycle		S1
FATTORE DI FORMA Form Factor	FF	1
TEMPERATURA AMBIENTE Room temperature	T rif °C	40°
GRADO DI PROTEZIONE Protection	IP	54
INERZIA ROTORE Rotor inertia	Jm Kgcm ²	0.9

ROK311L

DIMENSIONI (mm)

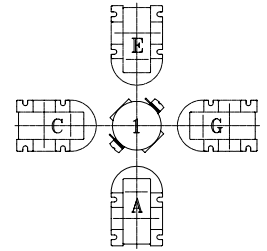
DIMENSIONS (mm)

B *



Vista frontale

Front view

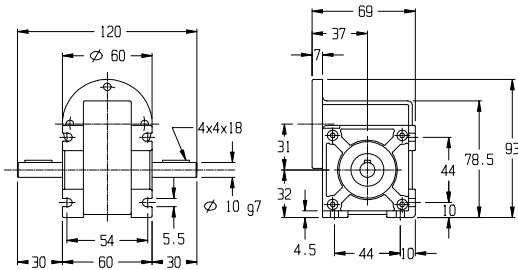


Configurazione

Configuration

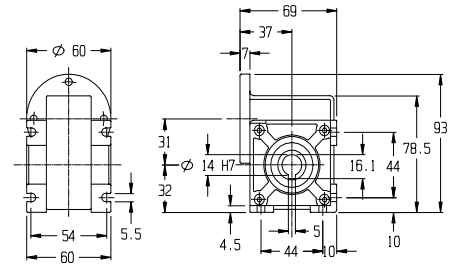
*** P.B10**

STD Config. **A1**



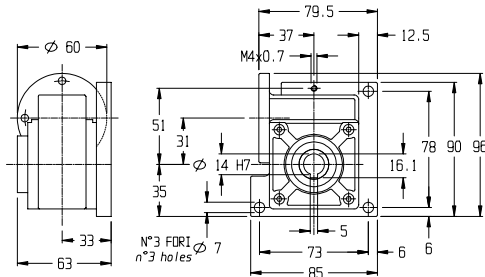
*** P.K14**

STD Config. **A1**



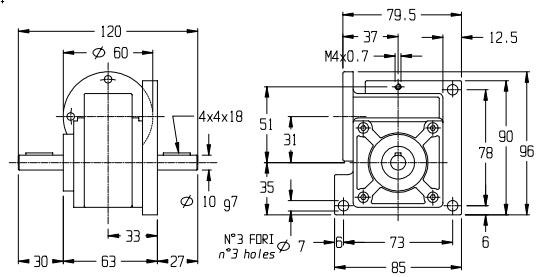
*** FQ1.K14.DX**

STD Config. **A1**



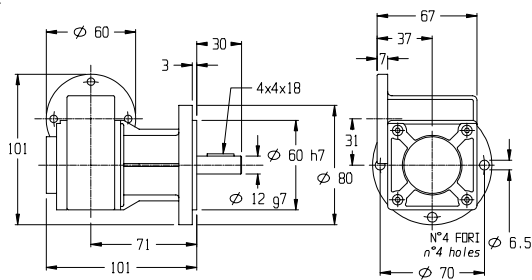
*** FQ1.B10.DX**

STD Config. **A1**



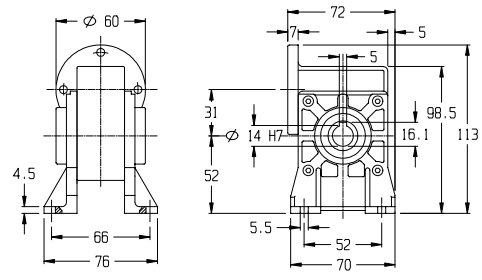
*** FT1.S12.DX**

STD Config. **A1**



*** P1.K14**

STD Config. **A1**



Accoppiare motore e riduttore contrassegnati dallo stesso segno * / **

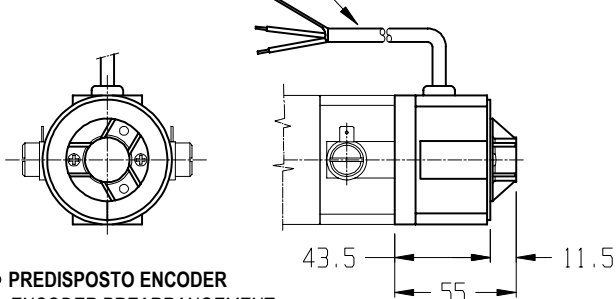
Fitting motor and gear box marked with the same symbol * / **

ROK311

OPTIONALS (mm)

DINAMO TACHIMETRICA 01 TACHO GENERATOR

* cavo schermato L=1m
shielded cable L=1m

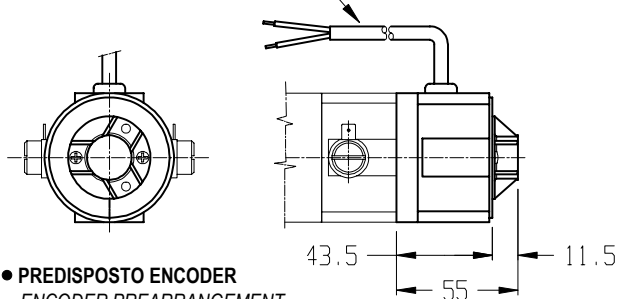


● PREDISPOSTO ENCODER
ENCODER PREARRANGEMENT

COSTANTE DI TENSIONE VOLTAGE CONSTANT	10±5% V/KRPM	CORRENTE NOMINALE RATED CURRENT	2 mA
VELOCITA' MASSIMA MAX SPEED	9000 RPM	CORRENTE MASSIMA MAX CURRENT	8 mA

FRENO 0.5 Nm 02 BRAKE 0.5 Nm

* n°2 cavi 0.5*1m
n°2 cables 0.5*1m

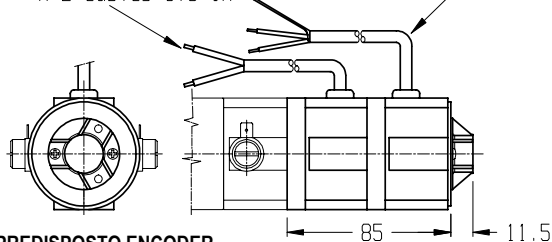


● PREDISPOSTO ENCODER
ENCODER PREARRANGEMENT

COPPIA STATICA STATIC TORQUE	0.5 Nm	CORRENTE CURRENT	0.42 A
TENSIONE DI ALIMEN. POWER SUPPLY VOLTAGE	24 V.c.c.	POTENZA ASSORBITA INPUT POWER	10 W

FRENO 0.5 Nm + DIN. TACHIMETRICA 03 TACHO GENERATOR + BRAKE 0.5 Nm

* n°2 cavi 0.5*1m
n°2 cables 0.5*1m

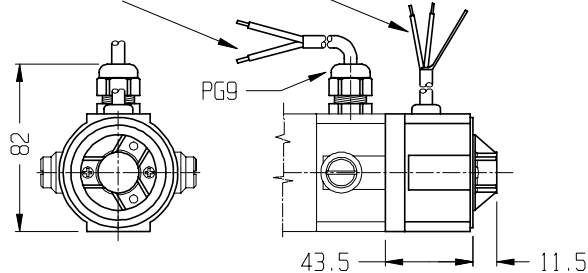


● PREDISPOSTO ENCODER
ENCODER PREARRANGEMENT

	FRENO BRAKE	DINAMO T. TACHO G.	
COPPIA STATICA STATIC TORQUE	0.5 Nm	COSTANTE DI TENSIONE VOLTAGE CONSTANT	10±5% V/KRPM
TENSIONE DI ALIMEN. POWER SUPPLY VOLTAGE	24 V.c.c.	VELOCITA' MASSIMA MAX SPEED	9000 RPM
CORRENTE CURRENT	0.42 A	CORRENTE NOMINALE RATED CURRENT	2 mA
POTENZA ASSORBITA INPUT POWER	10 W	CORRENTE MASSIMA MAX CURRENT	8 mA

CAVO + DINAMO TACHIMETRICA 05 TACHO GENERATOR + FLYING LEADS

* cavo AF 2*1.5*1m
cable 2*1.5*1m

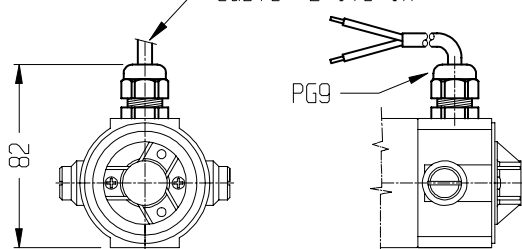


● PREDISPOSTO ENCODER
ENCODER PREARRANGEMENT

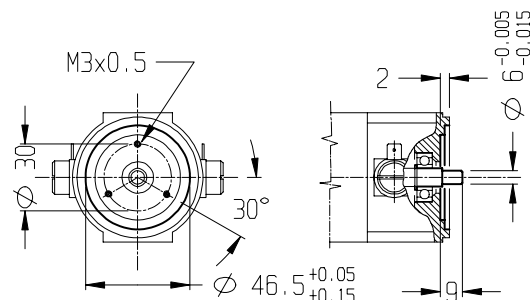
COSTANTE DI TENSIONE VOLTAGE CONSTANT	10±5% V/KRPM	CORRENTE NOMINALE RATED CURRENT	2 mA
VELOCITA' MASSIMA MAX SPEED	9000 RPM	CORRENTE MASSIMA MAX CURRENT	8 mA

CAVO 04 FLYING LEADS

* cavo AF 2*1.5*1m
cable 2*1.5*1m



PREDISPOSIZIONE ENCODER 06 ENCODER PREARRANGEMENT



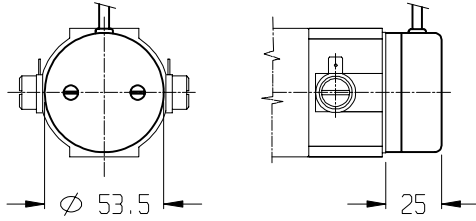
ROK311

OPTIONALS (mm)

ENCODER EH38

08

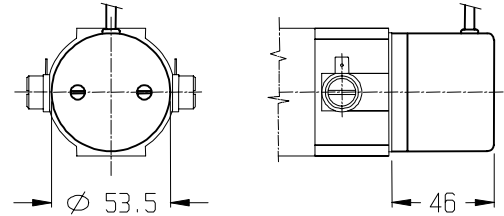
EH38 ENCODER



ENCODER EH53

09

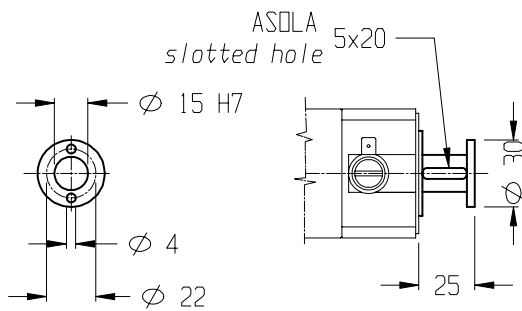
EH53 ENCODER



**DISTANZIALE
ENCODER N°1**

10

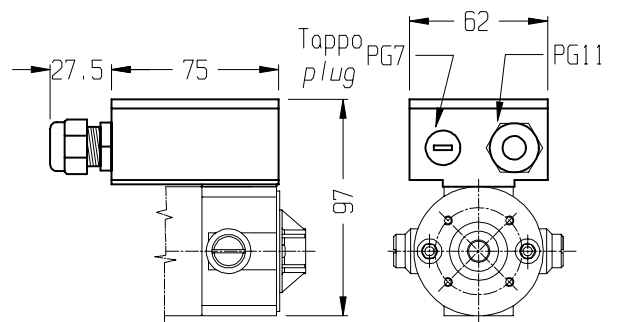
*ENCODER
SPACER N°1*



MORSETTIERA

11

TERMINAL BOX



MOTORIDUTTORI IN CORRENTE CONTINUA

D.C. GEARMOTORS

SERIE – Series

ROK 315

TABELLA DI DEFINIZIONE SIGLA DI ORDINE PER MOTORIDUTTORI SERIE ROK 315

HOW TO ORDER A ROK 315 WORMGEARMOTOR

ROK	315S	30	48	01.04....	B	P.B10	07	A1
SERIE SERIES	TIPO TYPE	VELOCITA' MOTORE MOTOR SPEED	TENSIONE MOTORE MOTOR VOLTAGE	OPZIONI OPTIONS	VERSIONE MOTORE MOTOR VERSION	TIPO DI RIDUTTORE WORMGEAR TYPE	RAPPORTO DI RIDUZIONE RATIO	CONFIGU- RAZIONE CONFIGU- RATION
ROK	315X 315XS 315S	30	24 48 60 90 180	01- Dinamo tachimetrica <i>Tacho generator</i> 04- Uscita cavi 2P 0.5m <i>Flying leads 2P 0.5m</i> 05- Uscita cavi 2P 0.5m + D.T. <i>Tacho g. + flying leads 2P 0.5m</i> 06- Past. Termica (solo morset.) <i>Thermal cut-out (only on terminal box version)</i> 07- Protezione IP55 <i>IP55</i> 08- Pred. encoder EH38 <i>EH38 encoder prearrangement</i> 09- Pred. encoder EH53 <i>EH53 encoder prearrangement</i> 10- Distanziale encoder n°1 <i>Encoder spacer n°1</i> 11- Distanziale encoder n°2 <i>Encoder spacer n°2</i> 15- Freno 1.7 Nm <i>Brake 1.7 Nm</i> 16- Freno 1.7 Nm + din. tachimet. <i>Tacho gen. + brake 1.7 Nm</i>	B : Base <i>Basic</i> P : Piedi <i>Foot mounting</i>	B.B10 B.K14 P.B10 P.K14 FT1.S12.DX P1.K14	07 10 12 15 18 24 30 38 55 75 100	A1 B1 C1 D1 E1 F1 G1 H1

DATA SHEET N° 6203000003

MOTORIDUTTORI IN CORRENTE CONTINUA

D.C. GEARMOTORS

SERIE-Series

ROK 315X

WATT Motore-motor 100	Nm Riduttore-gear 10
---	--

CARATTERISTICHE GENERALI - Performance characteristics

MOTORE Motor		POTENZA - Power 100 W					VELOCITA - Speed 3000 RPM				COPPIA - Torque 0.32 Nm		
RAPPORTO RIDUZIONE Ratio	I:	7	10	12	15	18	24	30	38	55	75	100*	
VELOCITA USCITA Output speed	RPM	429	300	250	200	167	125	100	79	55	40	30*	
COPPIA NOMINALE Rated Torque	Nm	1.7	2.2	2.6	3.3	3.8	3.7	4.5	5.6	7	6.2	7.4	
COPPIA MASSIMA Max. Torque	Nm-max.	(A) (B)	9.7 14.5	9.5 14.2	12.1 18	10.7 16	10.3 15.5	9.2 13.8	10.3 15.4	11.4 17.1	10.4 15.6	7.3 12	7.4 12
TENSIONE NOMINALE Rated Voltage	VOLT	180	90	60	48	24	(2)						
CORRENTE NOMINALE Rated Current	AMP	0.74	1.5	2.2	2.8	5.5							
RESIST. ARMATURA Armature resistance	Ohm	16.7	4.1	1.8	1.28	0.4							
INDUTT. ARMATURA Armature inductance	mH	46.5	10.25	4.15	2.95	0.8							
COST. TENSIONE Voltage constant	Ke V/Krpm	54	27	17	15	7							
COST. TEMPO ELETT. Elect. time constant	Te ms	2.8	2.5	2.3	2.3	2							
COST. TEMPO MECC. Mech. time constant	Tm ms	11	11	12	11	16							
COST. TEMPO TERMICO Thermal time constant	Tt min	20	20	20	20	20							

* Solo su richiesta only by request (2) Altre tensioni a richiesta-other voltages by request (A) Coppia massima riduttore continuativa (A) Max. gear continuous torque (B) Massima coppia impulsiva riduttore (B) Max. gear pulse torque

DATI MECCANICI - Mechanical data

CARICO RADIALE Radial Load	N	120
CARICO ASSIALE Axial Load	N	80
PESO MOTORIDUTTORE Gearmotor weight	Kg	3.6
LUBRIFICAZIONE Lubrication	GRASSO Long life grease	
CORONA Worm	BRONZO Bronze	
VITE Screw	ACCIAIO Steel	

DATI ELETTRICI - Winding data

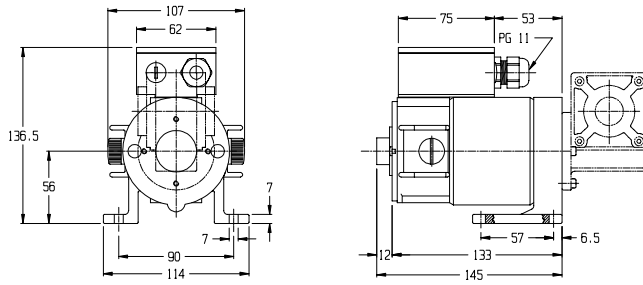
CLASSE ISOLAMENTO Insulation class		F
FATTORE DI SERVIZIO Duty cycle		S1
FATTORE DI FORMA Form Factor	FF	1
TEMPERATURA AMBIENTE Room temperature	T rif °C	40°
GRADO DI PROTEZIONE Protection	IP	54
INERZIA ROTORE Rotor inertia	Jm Kgcm ²	0.00018

ROK315X

DIMENSIONI (mm)

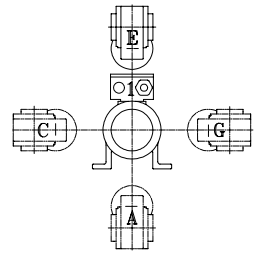
DIMENSIONS (mm)

P *



Vista frontale

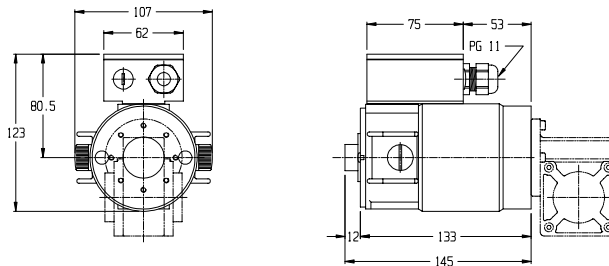
Front view



Configurazione

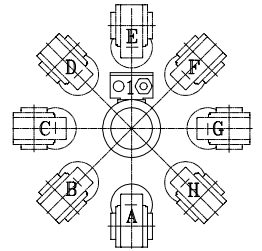
Configuration

B **



Vista frontale

Front view

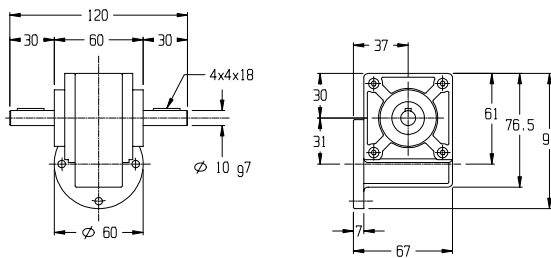


Configurazione

Configuration

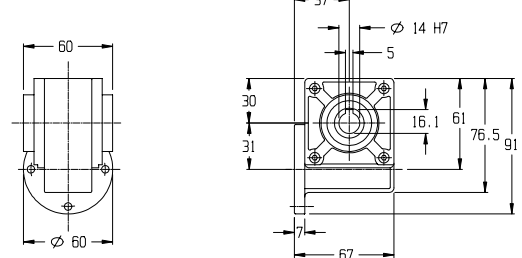
*** B.B10**

STD Config. **E1**



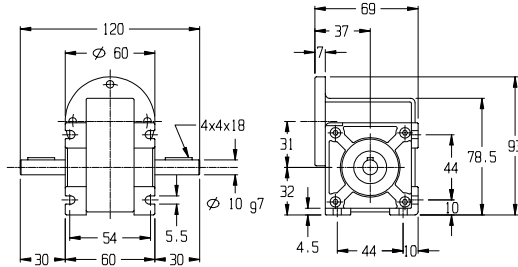
*** B.K14**

STD Config. **E1**



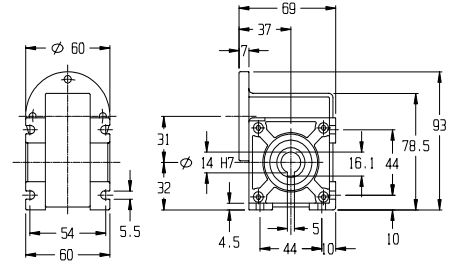
**** P.B10**

STD Config. **A1**



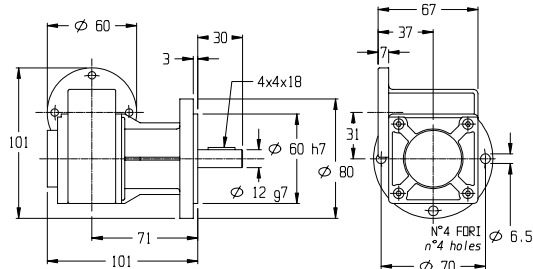
**** P.K14**

STD Config. **A1**



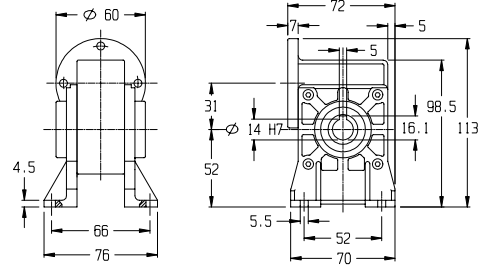
**** FT1.S12.DX**

STD Config. **A1**



**** P1.K14**

STD Config. **A1**



Accoppiare motore e riduttore contrassegnati dallo stesso segno * / **

Fitting motor and gear box marked with the same symbol * / **

MOTORIDUTTORI IN CORRENTE CONTINUA D.C. GEARMOTORS

SERIE-Series

ROK 315XS

WATT
Motore-motor
150

Nm
Riduttore-gear
10

CARATTERISTICHE GENERALI - Performance characteristics

MOTORE Motor		POTENZA - Power 150 W					VELOCITA' - Speed 3000 RPM				COPPIA - Torque 0.48 Nm		
RAPPORTO RIDUZIONE Ratio	I:	7	10	12	15	18	24	30	38	55	75	100*	
VELOCITA' USCITA Output speed	RPM	429	300	250	200	167	125	100	79	55	40	30*	
COPPIA NOMINALE Rated Torque	Nm	2.5	3.3	4	4.9	5.7	5.5	6.8	8.4	10.4	7.3	7.4	
COPPIA MASSIMA Max. Torque	Nm-max.	(A) (B)	9.7 14.5	9.5 14.2	12.1 18	10.7 16	10.3 15.5	9.2 13.8	10.3 15.4	11.4 17.1	10.4 15.6	7.3 12	7.4 12
TENSIONE NOMINALE Rated Voltage	VOLT	180	90	60	48	24	(2)						
CORRENTE NOMINALE Rated Current	AMP	1.1	2.27	3.3	4.2	8.33							
RESIST. ARMATURA Armature resistance	Ohm	13.9	3.5	1.64	1.1	0.29							
INDUTT. ARMATURA Armature inductance	mH	47	10.9	5.4	3.5	0.73							
COST. TENSIONE Voltage constant	Ke V/Krpm	54	26	18	15	7							
COST. TEMPO ELETT. Elect. time constant	Te ms	3.4	3.2	3.29	3.2	2.5							
COST. TEMPO MECC. Mech. time constant	Tm ms	15	17	17	16	19							
COST. TEMPO TERMICO Thermal time constant	Tt min	20	20	20	20	20							

* Solo su richiesta only by request (2) Altre tensioni a richiesta-other voltages by request (A) Coppia massima riduttore continuativa (A) Max. gear continuous torque (B) Massima coppia impulsiva riduttore (B) Max. gear pulse torque

DATI MECCANICI - Mechanical data

CARICO RADIALE Radial Load	N	120
CARICO ASSIALE Axial Load	N	80
PESO MOTORIDUTTORE Gearmotor weight	Kg	4.2
LUBRIFICAZIONE Lubrication	GRASSO Long life grease	
CORONA Worm	BRONZO Bronze	
VITE Screw	ACCIAIO Steel	

DATI ELETTRICI - Winding data

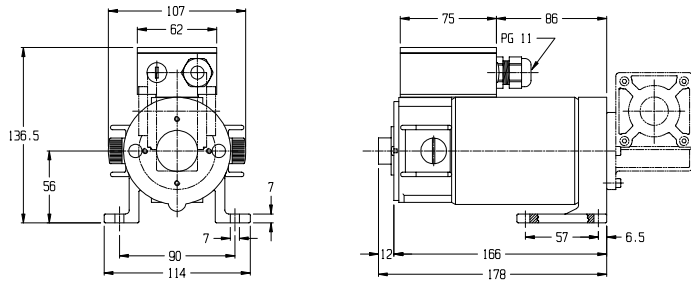
CLASSE ISOLAMENTO Insulation class		F
FATTORE DI SERVIZIO Duty cycle		S1
FATTORE DI FORMA Form Factor	FF	1
TEMPERATURA AMBIENTE Room temperature	T rif °C	40°
GRADO DI PROTEZIONE Protection	IP	54
INERZIA ROTORE Rotor inertia	Jm Kgcm ²	0.0003

ROK315Xs

DIMENSIONI (mm)

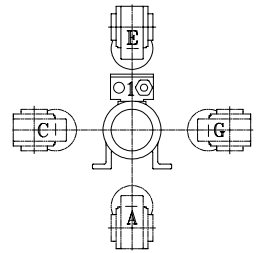
DIMENSIONS (mm)

P *



Vista frontale

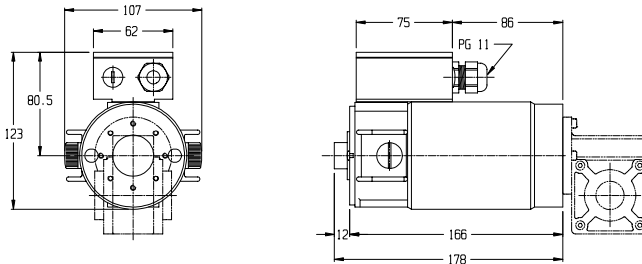
Front view



Configurazione

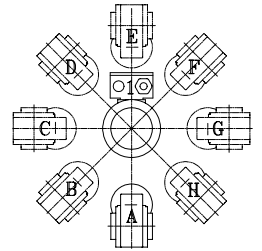
Configuration

B **



Vista frontale

Front view

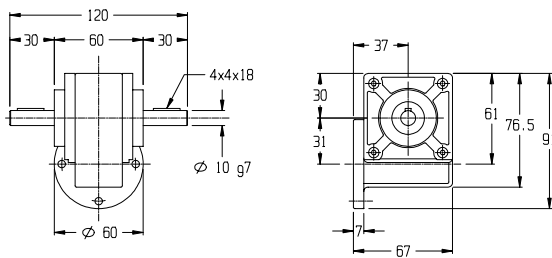


Configurazione

Configuration

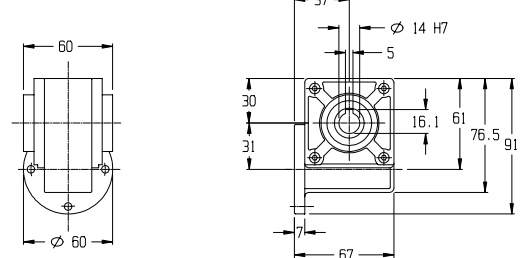
*** B.B10**

STD Config. **E1**



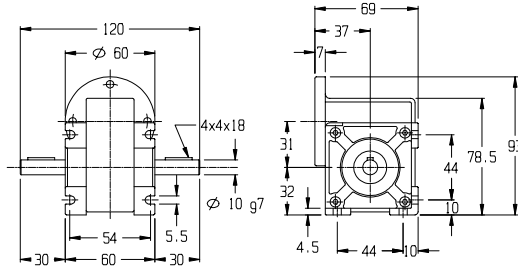
*** B.K14**

STD Config. **E1**



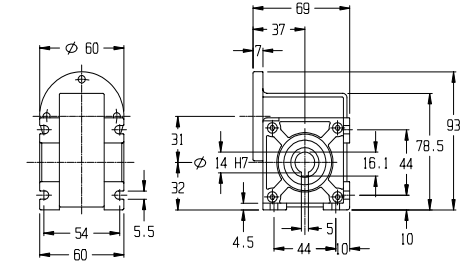
**** P.B10**

STD Config. **A1**



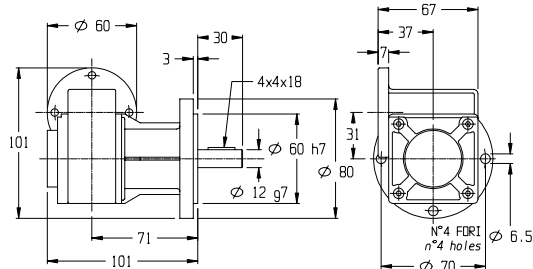
**** P.K14**

STD Config. **A1**



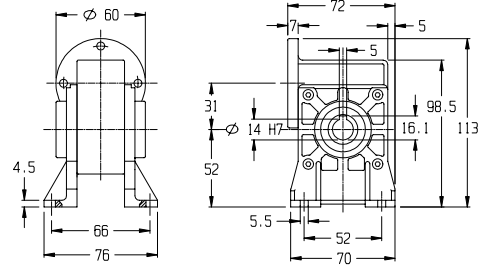
**** FT1.S12.DX**

STD Config. **A1**



**** P1.K14**

STD Config. **A1**



Accoppiare motore e riduttore contrassegnati dallo stesso segno * / **

Fitting motor and gear box marked with the same symbol * / **

MOTORIDUTTORI IN CORRENTE CONTINUA

D.C. GEARMOTORS

SERIE-Series

ROK 315S

WATT
Motore-motor
200

Nm
Riduttore-gear
10

CARATTERISTICHE GENERALI - Performance characteristics

MOTORE Motor		POTENZA - Power 200 W					VELOCITA - Speed 3000 RPM				COPPIA - Torque 0.64 Nm		
RAPPORTO RIDUZIONE Ratio	I:	7	10	12	15	18	24	30	38	55	75	100*	
VELOCITA USCITA Output speed	RPM	429	300	250	200	167	125	100	79	55	40	30*	
COPPIA NOMINALE Rated Torque	Nm	3.4	4.4	5.3	6.5	7.6	7.4	9	11.2	10.4	7.3	7.4	
COPPIA MASSIMA Max. Torque	Nm-max.	(A)	9.7	9.5	12.1	10.7	10.3	9.2	10.3	11.4	10.4	7.3	7.4
		(B)	14.5	14.2	18	16	15.5	13.8	15.4	17.1	15.6	12	12
TENSIONE NOMINALE Rated Voltage	VOLT	180	87	60	48	24	(2)						
CORRENTE NOMINALE Rated Current	AMP	1.4	2.95	4.3	5.3	10.7							
RESIST. ARMATURA Armature resistance	Ohm	6.15	1.36	0.92	0.6	0.17							
INDUTT. ARMATURA Armature inductance	mH	20	3.9	2.5	1.5	0.32							
COST. TENSIONE Voltage constant	Ke V/Krpm	54	26	18	15	7							
COST. TEMPO ELETT. Elect. time constant	Te ms	3.3	2.9	2.7	2.5	1.9							
COST. TEMPO MECC. Mech. time constant	Tm ms	14	13	19	17	23							
COST. TEMPO TERMICO Thermal time constant	Tt min	30	30	30	30	30							

* Solo su richiesta only by request (2) Altre tensioni a richiesta-other voltages by request (A) Coppia massima riduttore continuativa (A) Max. gear continuous torque (B) Massima coppia impulsiva riduttore (B) Max. gear pulse torque

DATI MECCANICI - Mechanical data

CARICO RADIALE Radial Load	N	120
CARICO ASSIALE Axial Load	N	80
PESO MOTORIDUTTORE Gearmotor weight	Kg	5.3
LUBRIFICAZIONE Lubrication	GRASSO Long life grease	
CORONA Worm	BRONZO Bronze	
VITE Screw	ACCIAIO Steel	

DATI ELETTRICI - Winding data

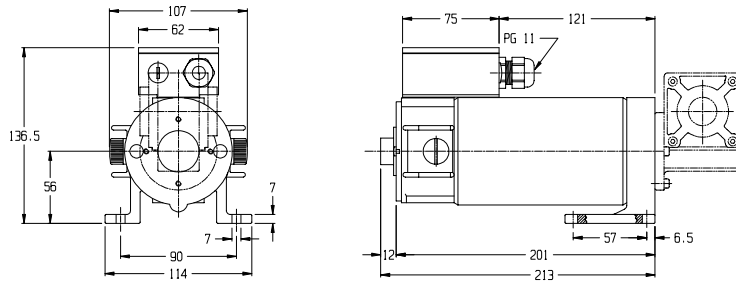
CLASSE ISOLAMENTO Insulation class	F	
FATTORE DI SERVIZIO Duty cycle	S1	
FATTORE DI FORMA Form Factor	FF	1
TEMPERATURA AMBIENTE Room temperature	T rif °C	40°
GRADO DI PROTEZIONE Protection	IP	54
INERZIA ROTORE Rotor inertia	Jm Kgcm ²	0.0006

ROK315S

DIMENSIONI (mm)

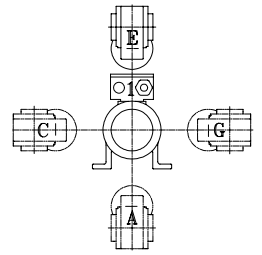
DIMENSIONS (mm)

P *



Vista frontale

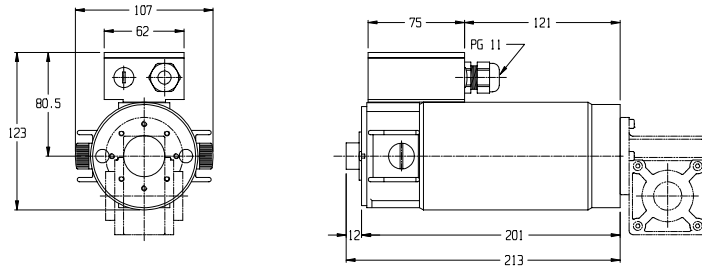
Front view



Configurazione

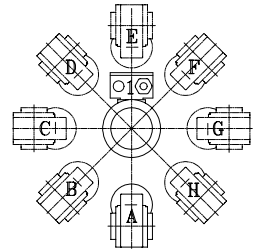
Configuration

B **



Vista frontale

Front view

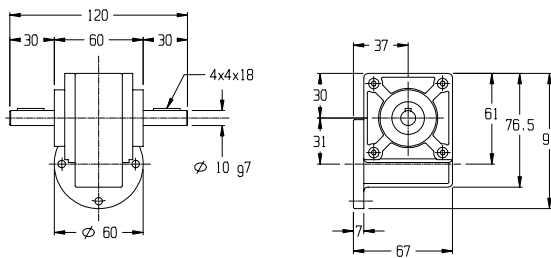


Configurazione

Configuration

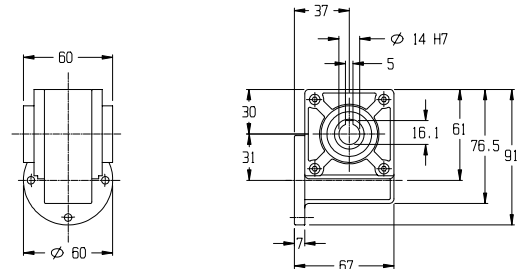
*** B.B10**

STD Config. **E1**



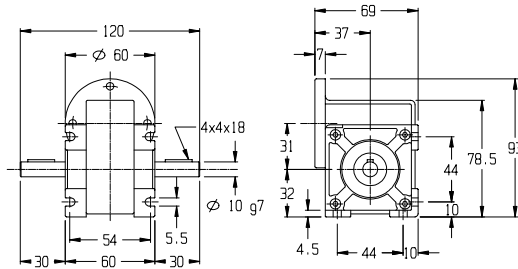
*** B.K14**

STD Config. **E1**



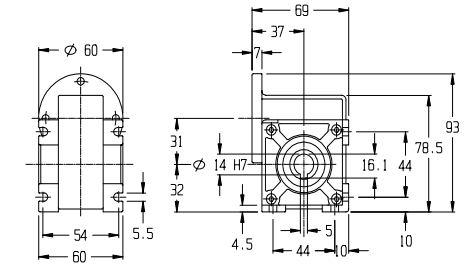
**** P.B10**

STD Config. **A1**



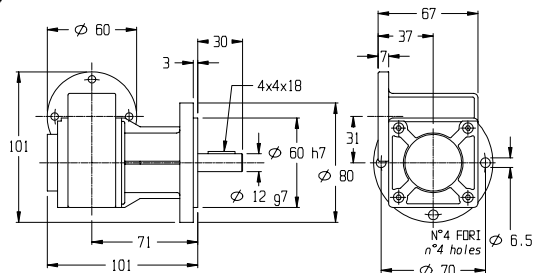
**** P.K14**

STD Config. **A1**



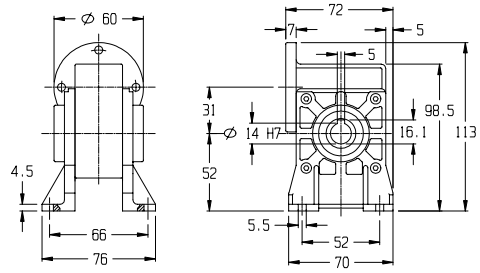
**** FT1.S12.DX**

STD Config. **A1**



**** P1.K14**

STD Config. **A1**



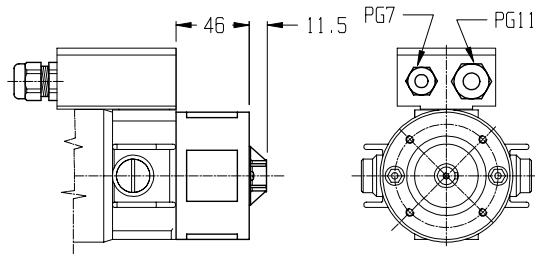
Accoppiare motore e riduttore contrassegnati dallo stesso segno * / **

Fitting motor and gear box marked with the same symbol * / **

ROK315

OPTIONALS (mm)

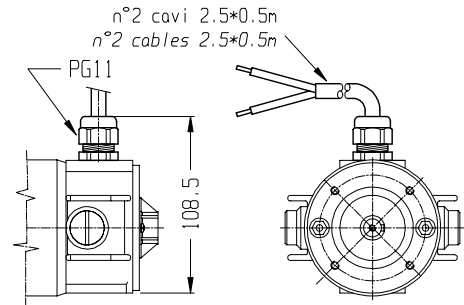
DINAMO TACHIMETRICA 01 TACHO GENERATOR



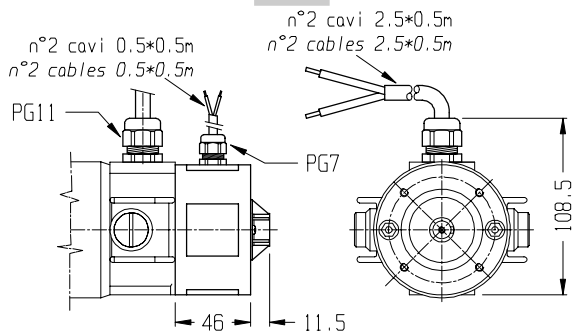
● PREDISPOSTO ENCODER ENCODER PREARRANGEMENT

COSTANTE DI TENSIONE VOLTAGE CONSTANT	10±5% V/KRPM	CORRENTE NOMINALE RATED CURRENT	2 mA
VELOCITA' MASSIMA MAX SPEED	9000 RPM	CORRENTE MASSIMA MAX CURRENT	8 mA

CAVO 04 FLYNG LEADS



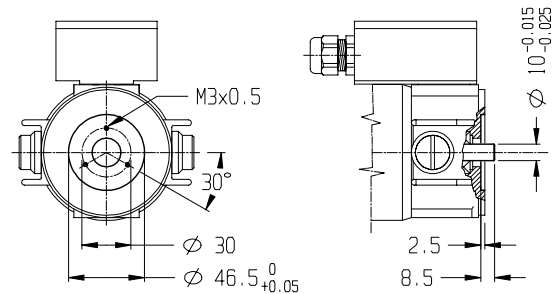
CAVO + DINAMO TACHIMETRICA 05 TACHO GENERATOR + FLYNG LEADS



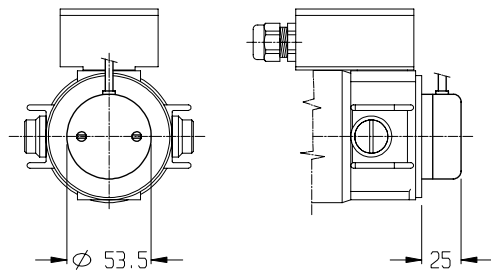
● PREDISPOSTO ENCODER ENCODER PREARRANGEMENT

COSTANTE DI TENSIONE VOLTAGE CONSTANT	10±5% V/KRPM	CORRENTE NOMINALE RATED CURRENT	2 mA
VELOCITA' MASSIMA MAX SPEED	9000 RPM	CORRENTE MASSIMA MAX CURRENT	8 mA

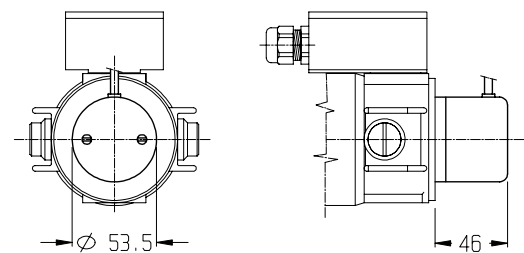
PREDISPOSIZIONE ENCODER ● ENCODER PREARRANGEMENT



ENCODER EH38 08 ENCODER EH38



ENCODER EH53 09 ENCODER EH53



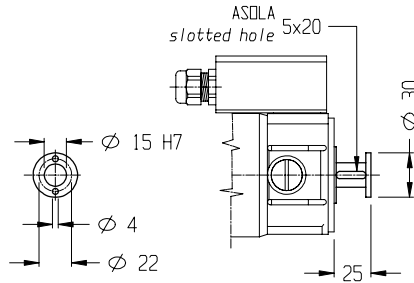
ROK315

OPTIONALS (mm)

**DISTANZIALE
ENCODER N°1**

10

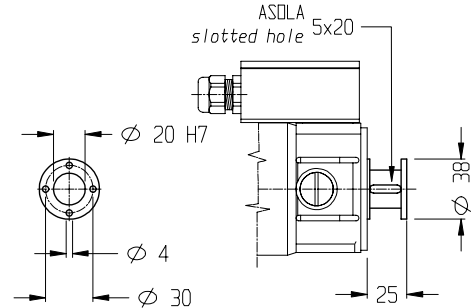
**ENCODER
SPACER N°1**



**DISTANZIALE
ENCODER N°2**

11

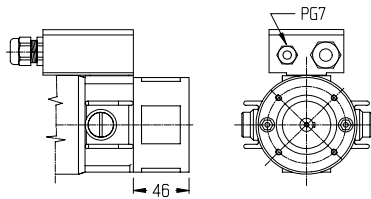
**ENCODER
SPACER N°2**



FRENO 1.7 Nm

15

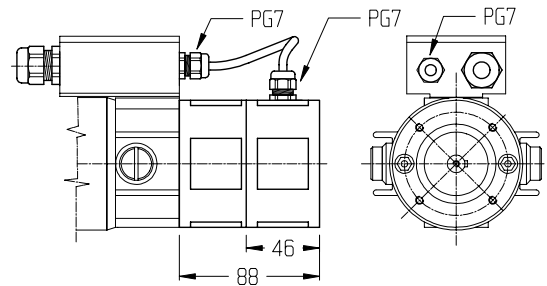
BRAKE 1.7 Nm



**FRENO 1.7 Nm +
DIN. TACHIM.**

16

**TACHO GENERATOR
+ BRAKE 1.7 Nm**



FRENO	BRAKE	DINAMO T.	TACHO G.
COPPIA STATICA STATIC TORQUE	1.7 Nm	COSTANTE DI TENSIONE VOLTAGE CONSTANT	10±5% V/KRPM
TENSIONE DI ALIMEN. POWER SUPPLY VOLTAGE	24-190 V.c.c.	VELOCITA' MASSIMA MAX SPEED	9000 RPM
CORRENTE CURRENT	0.46-0.058 A	CORRENTE NOMINALE RATED CURRENT	2 mA
POTENZA ASSORBITA INPUT POWER	11 W	CORRENTE MASSIMA MAX CURRENT	8 mA

COPPIA STATICA STATIC TORQUE	1.7 Nm	CORRENTE CURRENT	0.46-0.058 A
TENSIONE DI ALIMEN. POWER SUPPLY VOLTAGE	24-190 V.c.c.	POTENZA ASSORBITA INPUT POWER	11 W

MOTORIDUTTORI IN CORRENTE CONTINUA

D.C. GEARMOTORS

SERIE – Series

ROK 335

TABELLA DI DEFINIZIONE SIGLA DI ORDINE PER MOTORIDUTTORI SERIE ROK 335

HOW TO ORDER A ROK 335 WORMGEARMOTOR

ROK	335S	30	48	01.04....	B	P.B10	07	A1
SERIE SERIES	TIPO TYPE	VELOCITA' MOTORE MOTOR SPEED	TENSIONE MOTORE MOTOR VOLTAGE	OPZIONI OPTIONS	VERSIONE MOTORE MOTOR VERSION	TIPO DI RIDUTTORE WORMGEAR TYPE	RAPPORTO DI RIDUZIONE RATIO	CONFIGU- RAZIONE CONFIGU- RATION
ROK	335XS 335S 335SL	30	24 48 60 90 180	01- Dinamo tachimetrica <i>Tacho generator</i> 04- Uscita cavi 2P 0.5m <i>Flying leads 2P 0.5m</i> 05- Uscita cavi 2P 0.5m + D.T. <i>Tacho g. + flying leads 2P 0.5m</i> 06- Past. Termica (solo morset.) <i>Thermal cut-out (only on terminal box version)</i> 07- Protezione IP55 <i>IP55</i> 08- Pred. encoder EH38 <i>EH38 encoder prearrangement</i> 09- Pred. encoder EH53 <i>EH53 encoder prearrangement</i> 10- Distanziale encoder n°1 <i>Encoder spacer n°1</i> 11- Distanziale encoder n°2 <i>Encoder spacer n°2</i> 15- Freno 1.7 Nm <i>Brake 1.7 Nm</i> 16- Freno 1.7 Nm + din. tachimet. <i>Tacho gen. + brake 1.7 Nm</i>	B : Base <i>Basic</i> P : Piedi <i>Foot mounting</i>	B.B12 B.K14 P.B12 P.K14 FT3.S14.DX P1.K14	07 11 15 20 24 30 38 56 75	A1 B1 C1 D1 E1 F1 G1 H1

DATA SHEET N° 62050000003

MOTORIDUTTORI IN CORRENTE CONTINUA

D.C. GEARMOTORS

SERIE-Series

ROK 335XS

WATT
Motore-motor
150

Nm
Riduttore-gear
13

CARATTERISTICHE GENERALI - Performance characteristics

MOTORE <i>Motor</i>		POTENZA - Power 150 W	VELOCITA - Speed 3000 RPM					COPPIA - Torque 0.64 Nm					
RAPPORTO RIDUZIONE <i>Ratio</i>	I:	7	11	15	20	24	30	38	56	75			
VELOCITA USCITA <i>Output speed</i>	RPM	429	273	200	150	125	100	79	54	40			
COPPIA NOMINALE <i>Rated Torque</i>	Nm	2.4	3.4	4.3	5.2	5.6	6.2	7.5	7.8	8.6			
COPPIA MASSIMA <i>Max. Torque</i>	Nm-max.	(A) (B)	12 18	13 20	13 19.5	13 19	13 20	13 19	14 20	10 15	9 13.5		
TENSIONE NOMINALE <i>Rated Voltage</i>	VOLT	180	90	60	48	24	(2)						
CORRENTE NOMINALE <i>Rated Current</i>	AMP	1.1	2.27	3.3	4.2	8.33							
RESIST. ARMATURA <i>Armature resistance</i>	Ohm	13.9	3.5	1.64	1.1	0.29							
INDUTT. ARMATURA <i>Armature inductance</i>	mH	47	10.9	5.4	3.5	0.73							
COST. TENSIONE <i>Voltage constant</i>	Ke V/Krpm	54	26	18	15	7							
COST. TEMPO ELETT. <i>Elect. time constant</i>	Te ms	3.4	3.2	3.29	3.2	2.5							
COST. TEMPO MECC. <i>Mech. time constant</i>	Tm ms	15	17	17	16	19							
COST. TEMPO TERMICO <i>Thermal time constant</i>	Tt min	15	15	15	15	15							

(2) Altre tensioni a richiesta - other voltages by request (A) Coppia massima riduttore continuativa (A) Max. gear continuous torque
(B) Massima coppia impulsiva riduttore (B) Max. gear pulse torque

DATI MECCANICI - Mechanical data

CARICO RADIALE <i>Radial Load</i>	N	140
CARICO ASSIALE <i>Axial Load</i>	N	100
PESO MOTORIDUTTORE <i>Gearmotor weight</i>	Kg	4.3
LUBRIFICAZIONE <i>Lubrication</i>	GRASSO Long life grease	
CORONA <i>Worm</i>	BRONZO Bronze	
VITE <i>Screw</i>	ACCIAIO Steel	

DATI ELETTRICI - Winding data

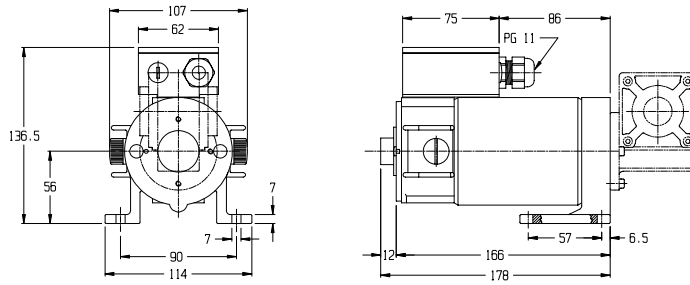
CLASSE ISOLAMENTO <i>Insulation class</i>		F
FATTORE DI SERVIZIO <i>Duty cycle</i>		S1
FATTORE DI FORMA <i>Form Factor</i>	FF	1
TEMPERATURA AMBIENTE <i>Room temperature</i>	T rif °C	40°
GRADO DI PROTEZIONE <i>Protection</i>	IP	54
INERZIA ROTORE <i>Rotor inertia</i>	Jm Kgcm ²	0.0003

ROK335X

DIMENSIONI (mm)

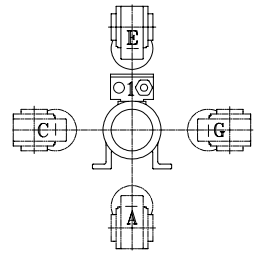
DIMENSIONS (mm)

P *



Vista frontale

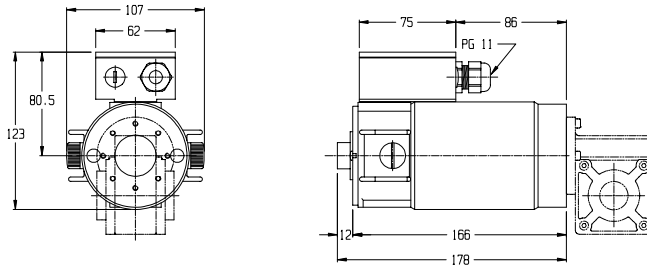
Front view



Configurazione

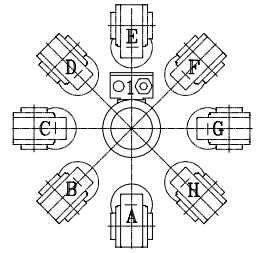
Configuration

B **



Vista frontale

Front view

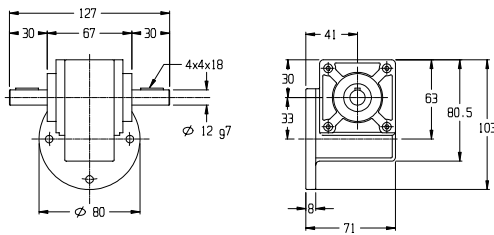


Configurazione

Configuration

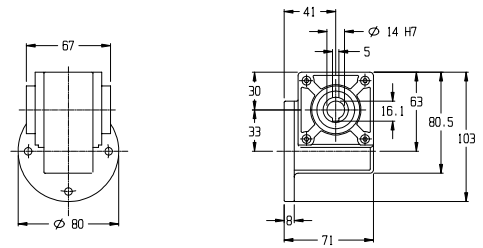
*** B.B12**

STD Config. **E1**



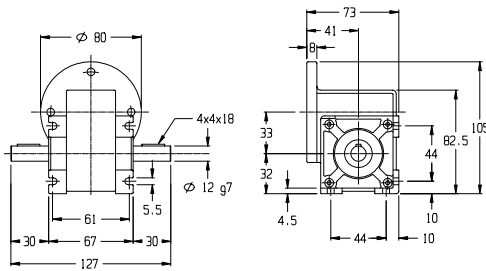
*** B.K14**

STD Config. **E1**



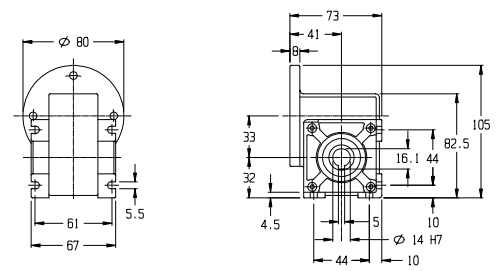
**** P.B12**

STD Config. **A1**



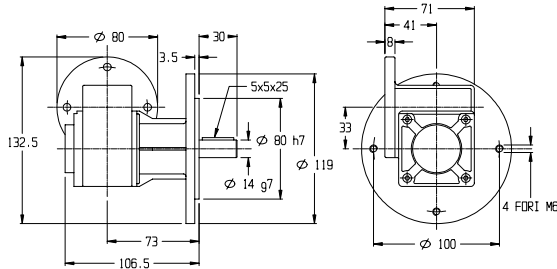
**** P.K14**

STD Config. **A1**



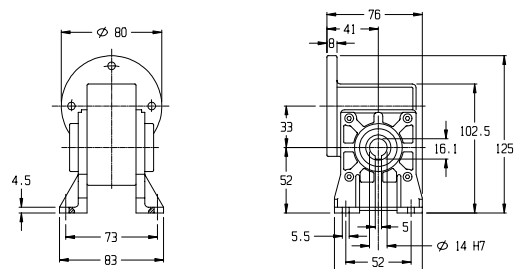
**** FT3.S14.DX**

STD Config. **A1**



**** P1.K14**

STD Config. **A1**



Accoppiare motore e riduttore contrassegnati dallo stesso segno * / **

Fitting motor and gear box marked with the same symbol * / **

MOTORIDUTTORI IN CORRENTE CONTINUA D.C. GEARMOTORS

SERIE-Series

ROK 335S

WATT
Motore-motor
200

Nm
Riduttore-gear
13

CARATTERISTICHE GENERALI - Performance characteristics

MOTORE Motor		POTENZA - Power 200 W					VELOCITA' - Speed 3000 RPM					COPPIA - Torque 0.64 Nm			
RAPPORTO RIDUZIONE Ratio	I:	7	11	15	20	24	30	38	56	75					
VELOCITA' USCITA Output speed	RPM	429	273	200	150	125	100	79	54	40					
COPPIA NOMINALE Rated Torque	Nm	3.2	4.6	5.8	6.9	7.5	8.3	10	10	9					
COPPIA MASSIMA Max. Torque	Nm-max.	(A) (B)	12 18	13 20	13 19.5	13 19	13 20	13 19	14 20	10 15	9 13.5				
TENSIONE NOMINALE Rated Voltage	VOLT	180	90	60	48	24	(2)								
CORRENTE NOMINALE Rated Current	AMP	1.4	2.95	4.3	5.3	10.7									
RESIST. ARMATURA Armature resistance	Ohm	6.15	1.36	0.92	0.6	0.17									
INDUTT. ARMATURA Armature inductance	mH	20	3.9	2.5	1.5	0.32									
COST. TENSIONE Voltage constant	Ke V/Krpm	54	26	18	15	7									
COST. TEMPO ELETT. Elect. time constant	Te ms	3.3	2.9	2.7	2.5	1.9									
COST. TEMPO MECC. Mech. time constant	Tm ms	14	13	19	17	23									
COST. TEMPO TERMICO Thermal time constant	Tt min	30	30	30	30	30									

(2) Altre tensioni a richiesta - other voltages by request (A) Coppia massima riduttore continuativa (A) Max. gear continuous torque
(B) Massima coppia impulsiva riduttore (B) Max. gear pulse torque

DATI MECCANICI - Mechanical data

CARICO RADIALE Radial Load	N	140
CARICO ASSIALE Axial Load	N	100
PESO MOTORIDUTTORE Gearmotor weight	Kg	5.4
LUBRIFICAZIONE Lubrication	GRASSO Long life grease	
CORONA Worm	BRONZO Bronze	
VITE Screw	ACCIAIO Steel	

DATI ELETTRICI - Winding data

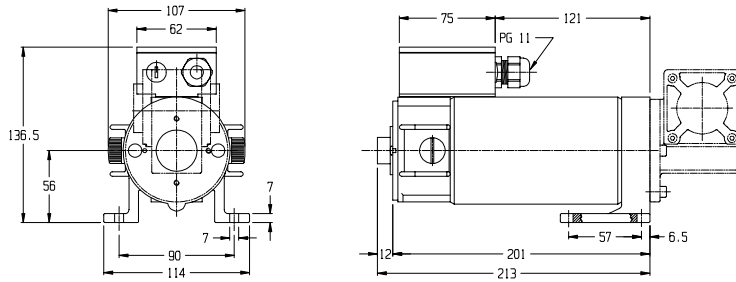
CLASSE ISOLAMENTO Insulation class		F
FATTORE DI SERVIZIO Duty cycle		S1
FATTORE DI FORMA Form Factor	FF	1
TEMPERATURA AMBIENTE Room temperature	T rif °C	40°
GRADO DI PROTEZIONE Protection	IP	54
INERZIA ROTORE Rotor inertia	Jm Kgcm ²	0.0006

ROK335S

DIMENSIONI (mm)

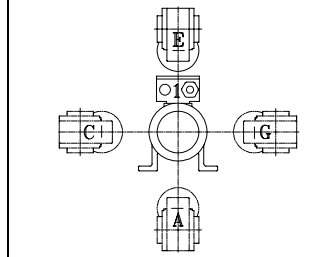
DIMENSIONS (mm)

P *



Vista frontale

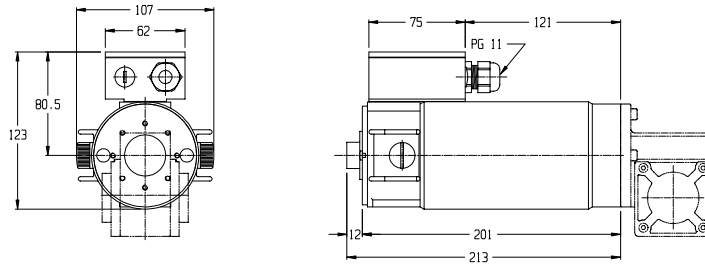
Front view



Configurazione

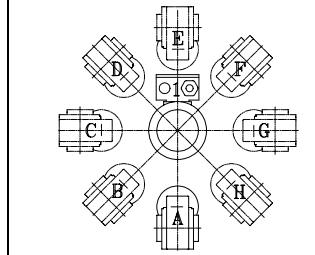
Configuration

B **



Vista frontale

Front view

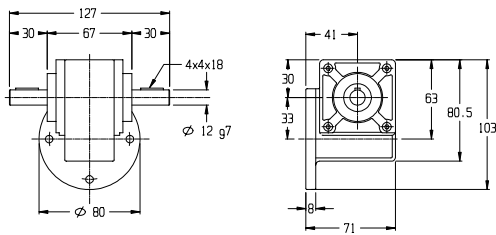


Configurazione

Configuration

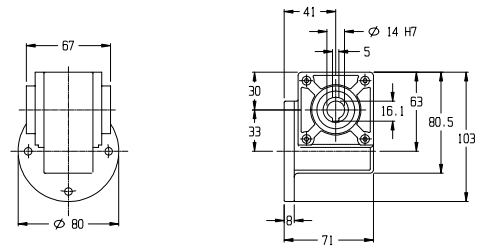
*** B.B12**

STD Config. **E1**



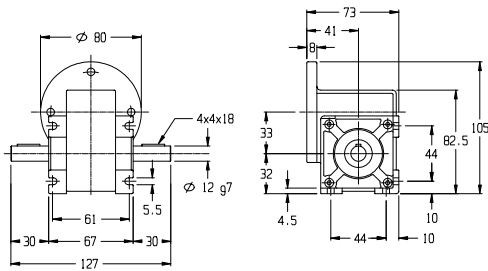
*** B.K14**

STD Config. **E1**



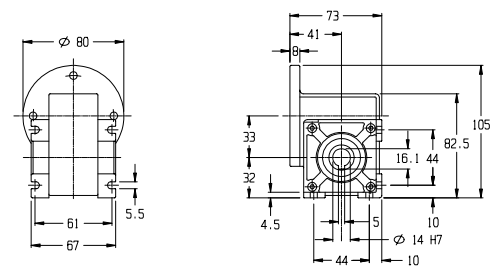
**** P.B12**

STD Config. **A1**



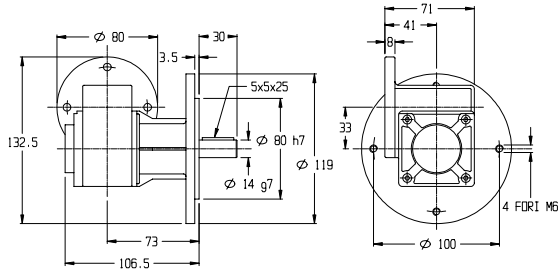
**** P.K14**

STD Config. **A1**



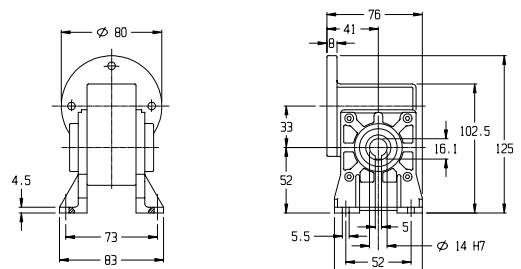
**** FT3.S14.DX**

STD Config. **A1**



**** P1.K14**

STD Config. **A1**



Accoppiare motore e riduttore contrassegnati dallo stesso segno * / **

Fitting motor and gear box marked with the same symbol * / **

MOTORIDUTTORI IN CORRENTE CONTINUA D.C. GEARMOTORS

SERIE-Series

ROK 335SL

WATT
Motore-motor
300

Nm
Riduttore-gear
13

CARATTERISTICHE GENERALI - Performance characteristics

MOTORE Motor		POTENZA - Power 300 W					VELOCITA' - Speed 3000 RPM					COPPIA - Torque 0.96 Nm			
RAPPORTO RIDUZIONE Ratio	I:	7	11	15	20	24	30	38	56	75					
VELOCITA' USCITA Output speed	RPM	429	273	200	150	125	100	79	54	40					
COPPIA NOMINALE Rated Torque	Nm	4.8	6.9	8.6	10.4	11.3	12.4	14	10	9					
COPPIA MASSIMA Max. Torque	Nm-max.	(A) (B)	12 18	13 20	13 19.5	13 19	13 20	13 19	14 20	10 15	9 13.5				
TENSIONE NOMINALE Rated Voltage	VOLT	180	90	60	48	24	(2)								
CORRENTE NOMINALE Rated Current	AMP	2.1	4.2	6.3	7.8	15.6									
RESIST. ARMATURA Armature resistance	Ohm	5.3	1.41	0.67	0.4	0.16									
INDUTT. ARMATURA Armature inductance	mH	18	4.1	2	1.2	0.32									
COST. TENSIONE Voltage constant	Ke V/Krpm	55.5	27	19	15	7.5									
COST. TEMPO ELETT. Elect. time constant	Te ms	3.5	3.13	3	3	2									
COST. TEMPO MECC. Mech. time constant	Tm ms	13	19	14	14	22									
COST. TEMPO TERMICO Thermal time constant	Tt min	35	35	35	35	35									

(2) Altre tensioni a richiesta - other voltages by request (A) Coppia massima riduttore continuativa (A) Max. gear continuous torque
(B) Massima coppia impulsiva riduttore (B) Max. gear pulse torque

DATI MECCANICI - Mechanical data

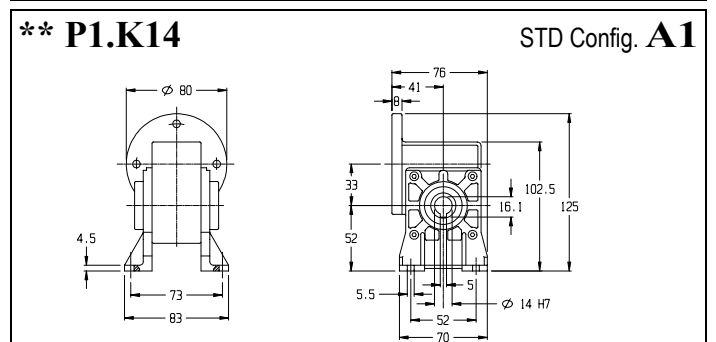
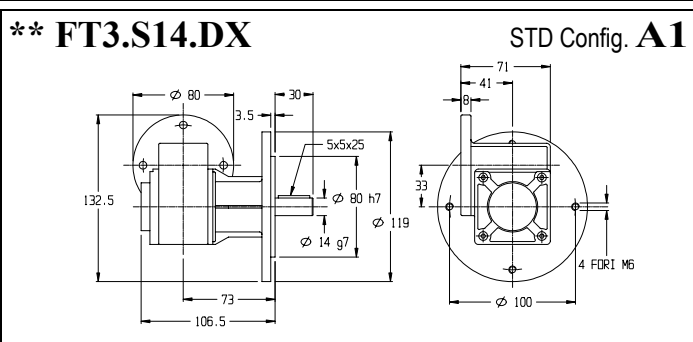
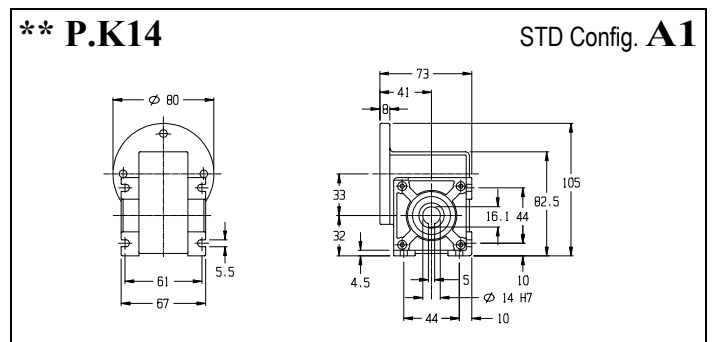
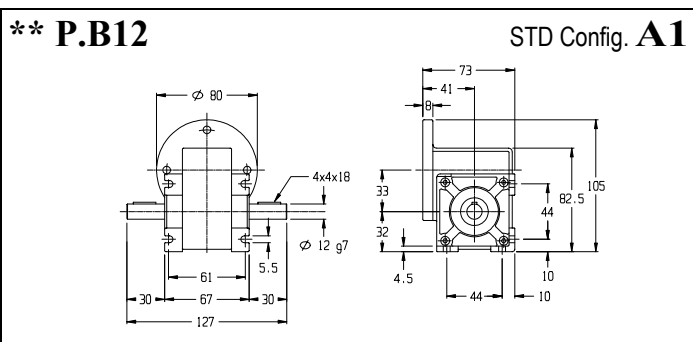
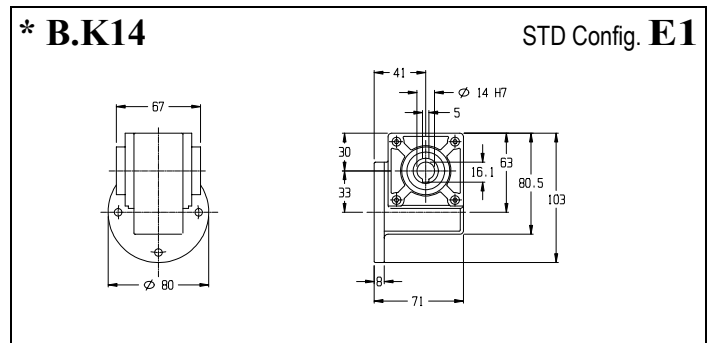
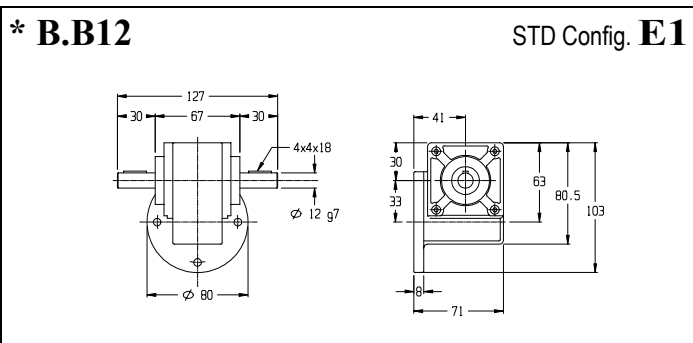
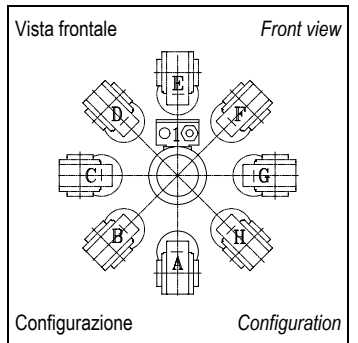
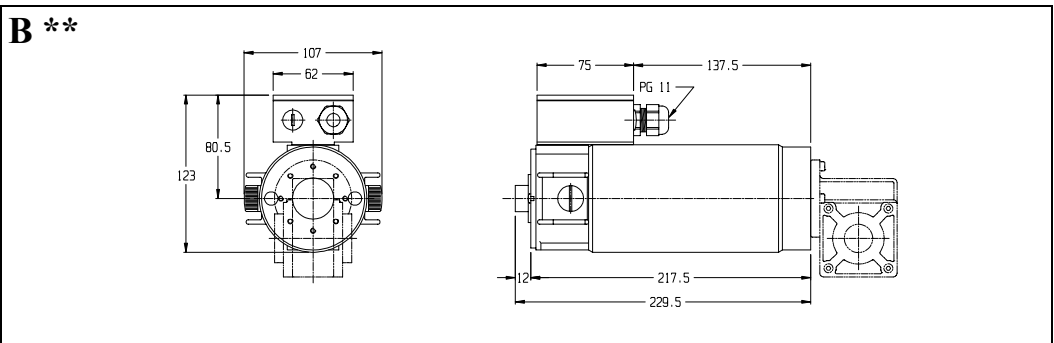
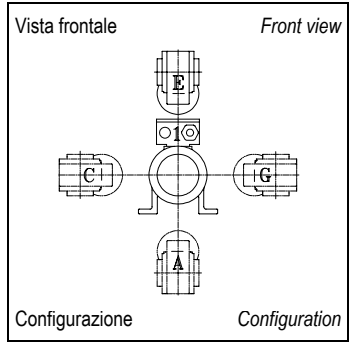
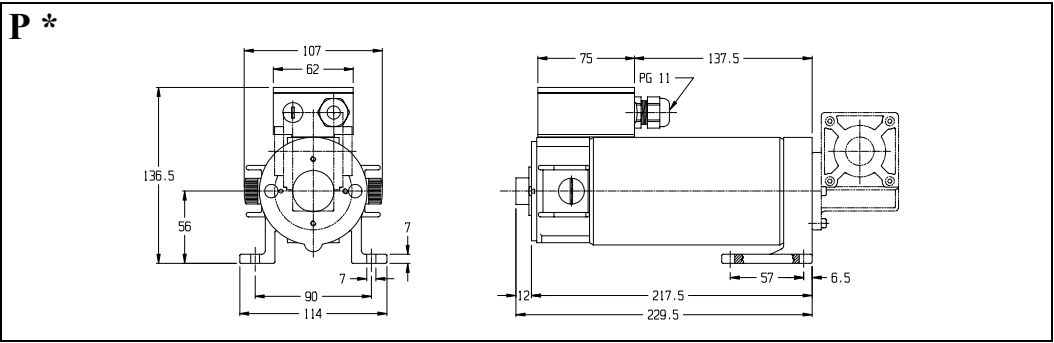
CARICO RADIALE Radial Load	N	140
CARICO ASSIALE Axial Load	N	100
PESO MOTORIDUTTORE Gearmotor weight	Kg	6
LUBRIFICAZIONE Lubrication	GRASSO Long life grease	
CORONA Worm	BRONZO Bronze	
VITE Screw	ACCIAIO Steel	

DATI ELETTRICI - Winding data

CLASSE ISOLAMENTO Insulation class		F
FATTORE DI SERVIZIO Duty cycle		S1
FATTORE DI FORMA Form Factor	FF	1
TEMPERATURA AMBIENTE Room temperature	T rif °C	40°
GRADO DI PROTEZIONE Protection	IP	54
INERZIA ROTORE Rotor inertia	Jm Kgcm ²	0.0007

ROK335SL

DIMENSIONI (mm) **DIMENSIONS (mm)**

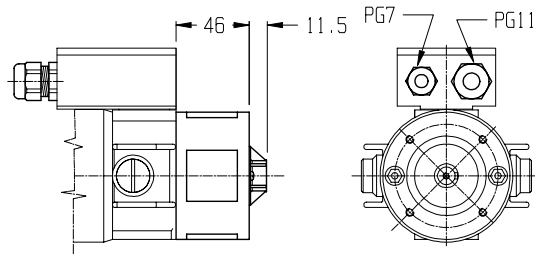


Accoppiare motore e riduttore contrassegnati dallo stesso segno * / **
 Fitting motor and gear box marked with the same symbol * / **

ROK335

OPTIONALS (mm)

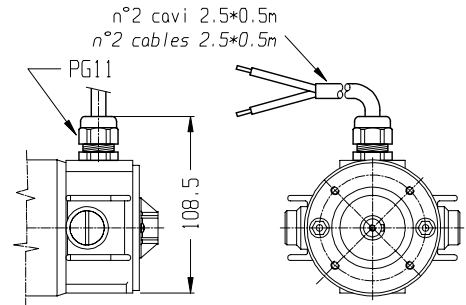
DINAMO TACHIMETRICA **01** *TACHO GENERATOR*



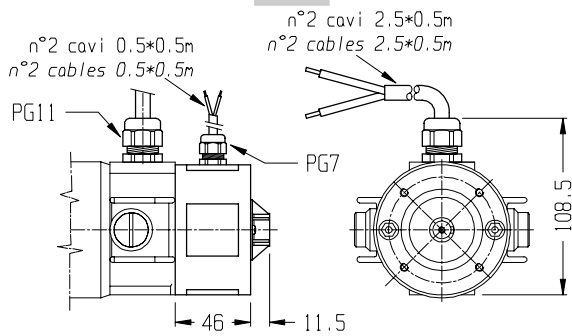
● PREDISPOSTO ENCODER ENCODER PREARRANGEMENT

COSTANTE DI TENSIONE VOLTAGE CONSTANT	10±5% V/KRPM	CORRENTE NOMINALE RATED CURRENT	2 mA
VELOCITA' MASSIMA MAX SPEED	9000 RPM	CORRENTE MASSIMA MAX CURRENT	8 mA

CAVO **04** *FLYNG LEADS*



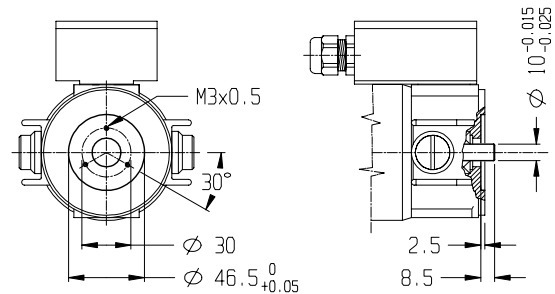
CAVO + DINAMO TACHIMETRICA **05** *TACHO GENERATOR + FLYNG LEADS*



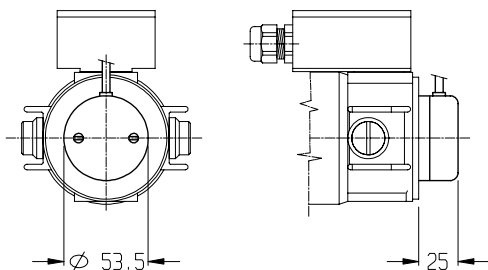
● PREDISPOSTO ENCODER ENCODER PREARRANGEMENT

COSTANTE DI TENSIONE VOLTAGE CONSTANT	10±5% V/KRPM	CORRENTE NOMINALE RATED CURRENT	2 mA
VELOCITA' MASSIMA MAX SPEED	9000 RPM	CORRENTE MASSIMA MAX CURRENT	8 mA

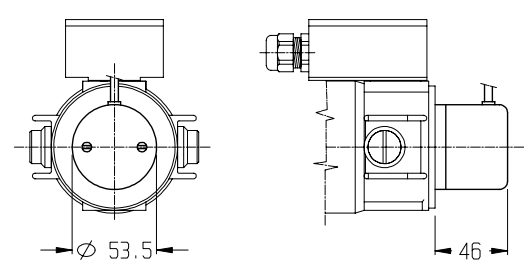
PREDISPOSIZIONE ENCODER ● *ENCODER PREARRANGEMENT*



ENCODER EH38 **08** *ENCODER EH38*



ENCODER EH53 **09** *ENCODER EH53*



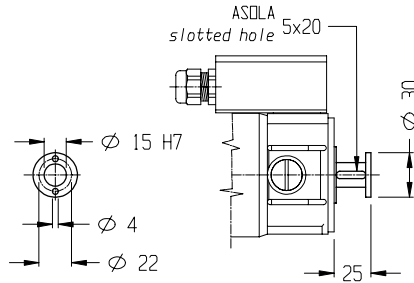
ROK335

OPTIONALS (mm)

**DISTANZIALE
ENCODER N°1**

10

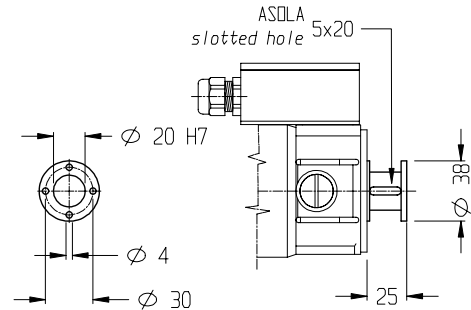
**ENCODER
SPACER N°1**



**DISTANZIALE
ENCODER N°2**

11

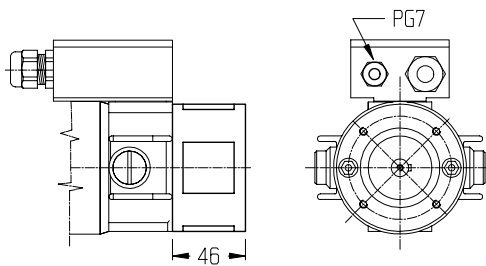
**ENCODER
SPACER N°2**



FRENO 1.7 Nm

15

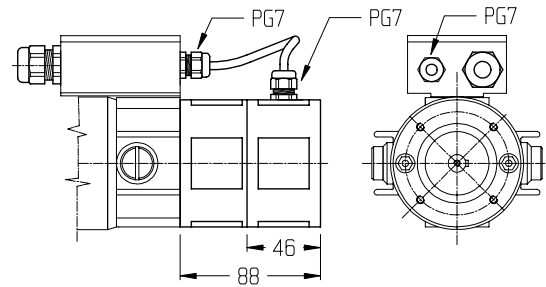
BRAKE 1.7 Nm



**FRENO 1.7 Nm +
DIN. TACHIM.**

16

**TACHO GENERATOR
+ BRAKE 1.7 Nm**



COPPIA STATICA STATIC TORQUE	1.7 Nm	CORRENTE CURRENT	0.46-0.058 A
TENSIONE DI ALIMEN. POWER SUPPLY VOLTAGE	24-190 V.c.c.	POTENZA ASSORBITA INPUT POWER	11 W

FRENO	BRAKE	DINAMO T.	TACHO G.
COPPIA STATICA STATIC TORQUE	1.7 Nm	COSTANTE DI TENSIONE VOLTAGE CONSTANT	10±5% V/KRPM
TENSIONE DI ALIMEN. POWER SUPPLY VOLTAGE	24-190 V.c.c.	VELOCITA' MASSIMA MAX SPEED	9000 RPM
CORRENTE CURRENT	0.46-0.058 A	CORRENTE NOMINALE RATED CURRENT	2 mA
POTENZA ASSORBITA INPUT POWER	11 W	CORRENTE MASSIMA MAX CURRENT	8 mA